

STEM...ulate your Imagination

HANES MAGNET SCHOOL



Daily Schedule

Student day

Homeroom - SSR - Schoolwide - accountability piece

- 7:40-2:10

Core classes

- 1st-4th Periods

Encore

- 5th & 6th Periods

A Day/B Day

- Encore classes run on an A day/B day rotation.
- School year begins with A day
- A day/B day calendar is on school and district website under calendars.
- Adjustments may be made due to bad weather or high school exam schedules.

Email and Contact Information

- E-mail is an easy manner in which to communicate with teachers.
- Teachers have limited access to email during the school day. Please allow a 24 hour turn-around for responses.

Updating addresses and contact information

- Proof of residence is required when changing an address.
- Phone number and email changes may be made with Kirsti Williams in our guidance office.

Website

- The school, grade level team and teachers maintain an up to date website.
- For information regarding your child's class, refer to their teacher or team website.
- Teacher and team sites may be accessed from the district website.

Standard Mode of Dress (SMOD)

⦿ Pants/Skirts/Shorts

- Black or Khaki in color
- Skirts and shorts must follow the dollar bill rule. Place the end of the bill at the bottom of the knee cap, the opposite end of the bill should touch or pass the edge of the shorts or skirt.
- Tights and leggings are not considered pants and must have a skirt or pants over them that meet dress code.

⦿ Shirts

- Black, White, Khaki, Purple or Yellow
- Must have a collar and sleeve.
- Logos must be the size of a business card or smaller

⦿ Dresses

- Black, or Khaki,
- Must have a collar and sleeve.
- Logos must be the size of a business card or smaller

SMOD (Continued)

⦿ Jackets

- Light jackets/hoodies may be worn in the building. No hoods may be on in hallways or classrooms.
- Black, White, Khaki, Purple or yellow
- Must be solid in color.
- May NOT have large logos. The exception is Hanes apparel sold by PTSA.

⦿ Heavy Coats

- May not be worn in the building.
- Must be put in backpack on on back of chair.

Shoes

- ⦿ We request students refrain from wearing flip flops, slides and other open toe shoes.

Process for students out of SMOD

- Students will have the option of changing into SMOD or calling home for a change of clothes.
- Students may return to class **ONCE** they are in dress code.
- Repeat offenders **WILL** receive a disciplinary consequence.

Gently used SMOD is for sale in the GYM during orientation and open house.

Proceeds will go to the Hanes PTSA.

SMOD RE-SALE

Cafeteria

- Breakfast is available from 7:10 am to 7:35am.
- 6th graders eat lunch with their 3rd period teacher.
- Lunch is free for all students. Parents are encouraged to fill out free/reduced forms.
- Student Meal Accounts. You can visit <http://www.myschoolbucks.com/> to put money onto a student's account or deposit money directly with the cafeteria staff.

Transportation

○ Transportation

- Requests today will be made in the Cafeteria. Boarding passes are available as well.
- To request a new stop, parents should go to our student services office with proof of residence.
- Delays can be tracked by following “Here comes the Bus” App download available. Fliers are available in the cafeteria. Follow daily changes on Twitter, @BusesHanes
- Buses depart campus by 2:20pm.
- Bus notes must be turned into the front office at the beginning of the day. They will not be accepted on the bus lot.
- Bus schedules will be off the first two weeks of school, expect delays.

Safety/Security

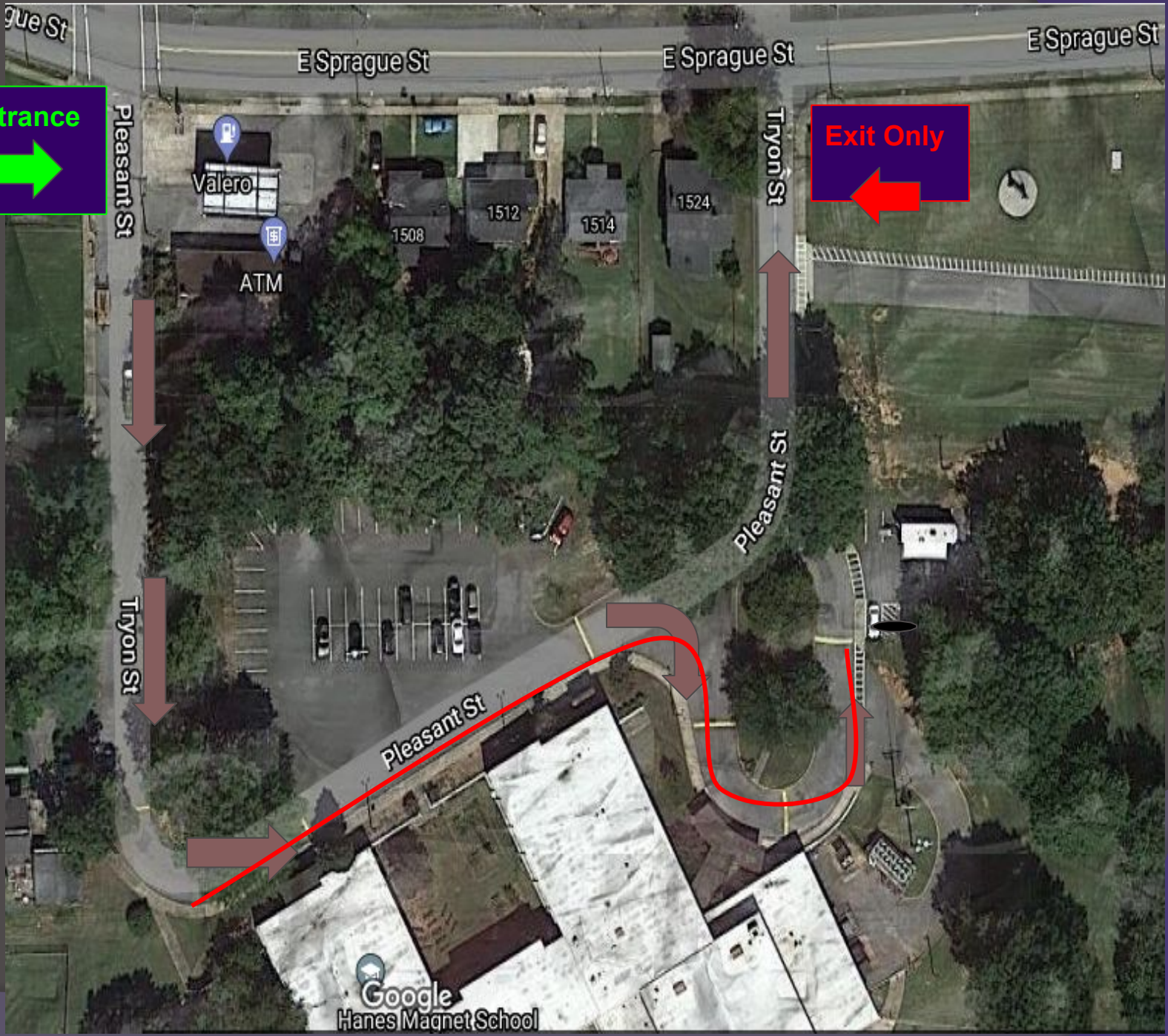
- Students are responsible for securing their electronic devices in backpacks. They do not need phones at school and can't have them turned on.
- Students are supervised during transitions.
- We like parent visitors, but they must check in the front office and get a pass.
- We conduct monthly fire drills and quarterly lockdown drills.
- Earthquake drills are conducted once a year
- Tornado/Weather drills are conducted each semester.

Arrivals/Departures

- Vehicles enter the school drive on Pleasant St.
- Vehicles pull as far forward as possible.
- Students may exit their vehicle when their vehicle when they come to a natural stop in the red highlighted area.
- Students should have items ready and quickly exit their vehicle.
- Cars should remain in the line at all times and move slowly with the flow of traffic.
- Parents with business in the building should park in the far lot at the end of the traffic circle.
- Pleasant Street is a two way street and there are residents living along it. Please remain on the right side of the road.
- Please do not block drives on Pleasant or Sprague St. while in the traffic line.

Entrance
→

Exit Only
←

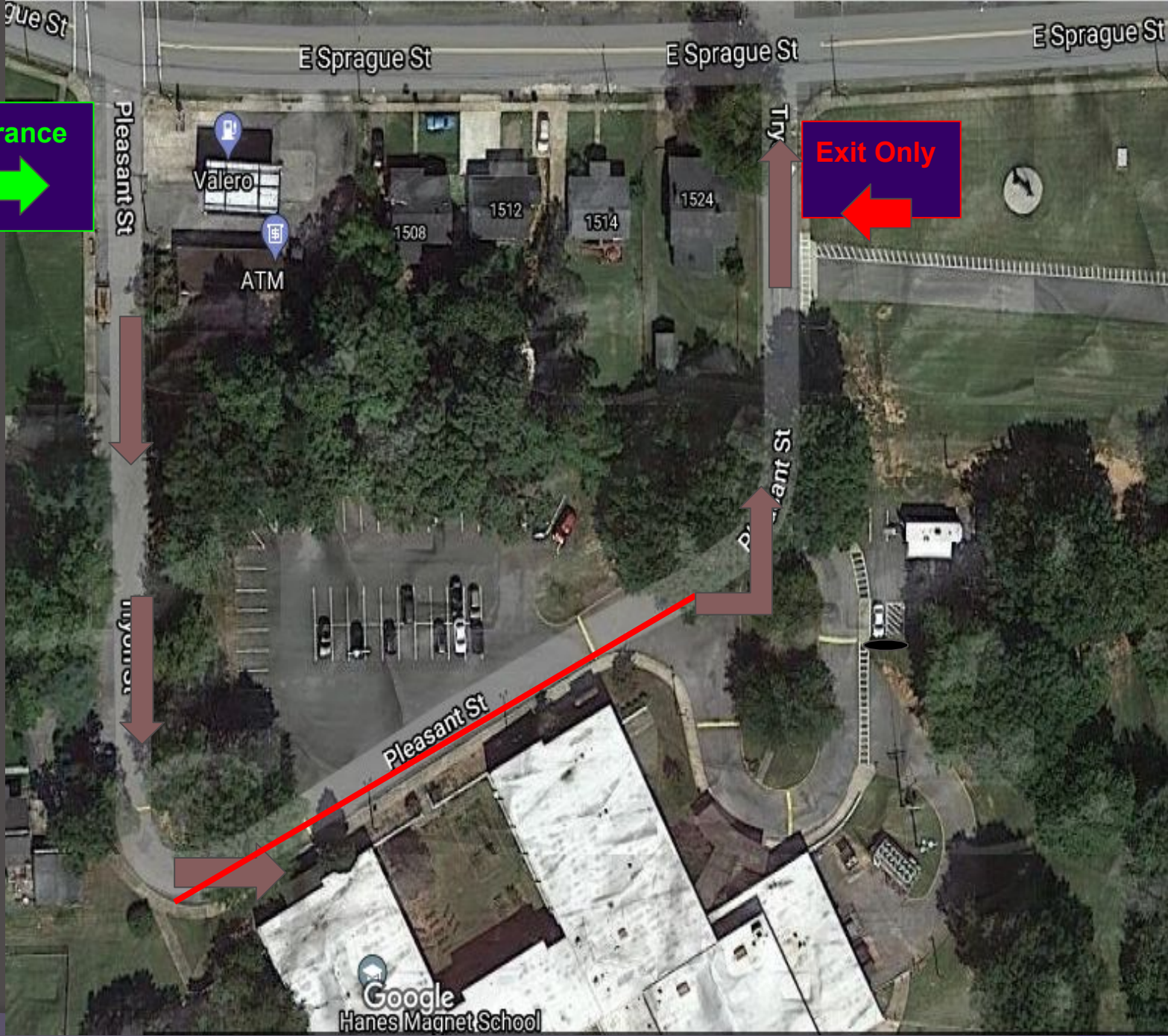


Departure

- Please do not block driveways on Sprague and Pleasant St.
- Vehicles line in the red highlighted area.
- Students will be dismissed by grade level. Please do not arrive before your students designated time. This results in traffic congestion.
 - 6th grade - 2:05
 - 7th grade - 2:08
 - 8th grade - 2:10
 - students will stand on dot.
- Parents must remain in line to pick up students. We will not let students cross over to cars who have gotten out of line and pulled around.
- Students will not be allowed to walk up the street to meet a car.
- After students get in their vehicle, you may pull out to leave campus.
- Students habitually late being picked up will need to get a bus assignment.

Entrance
→

Exit Only
←



Student Pick Up

Yellow Dot- Volunteers - Lalonde, Prevetier, Byrd, Murden (Walters) **Outside in the courtyard**

Red Dot - Tarheels - Robbins, Letterhos, Matlock, Pullen - **In Homerooms**

Silver Dot - Tigers - Fricke, Caraballos, Fleming, Ishak - **Cafeteria**

Thank You!!