

# The Inca Empire

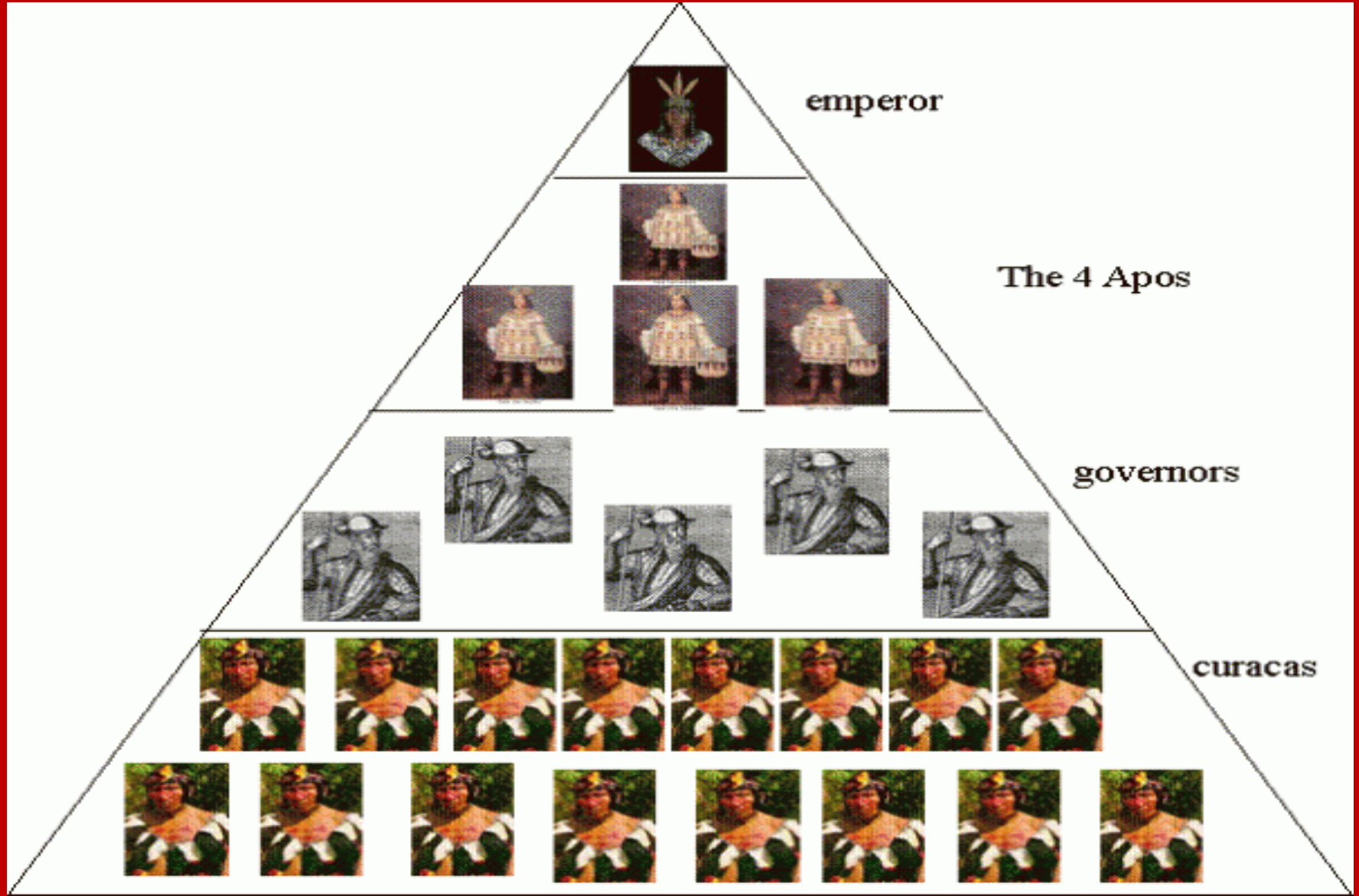
E.Q. How was the Inca civilization structured politically and economically and what were some of its major cultural characteristics?

# Government



Atahualpa

# Government



# Economy

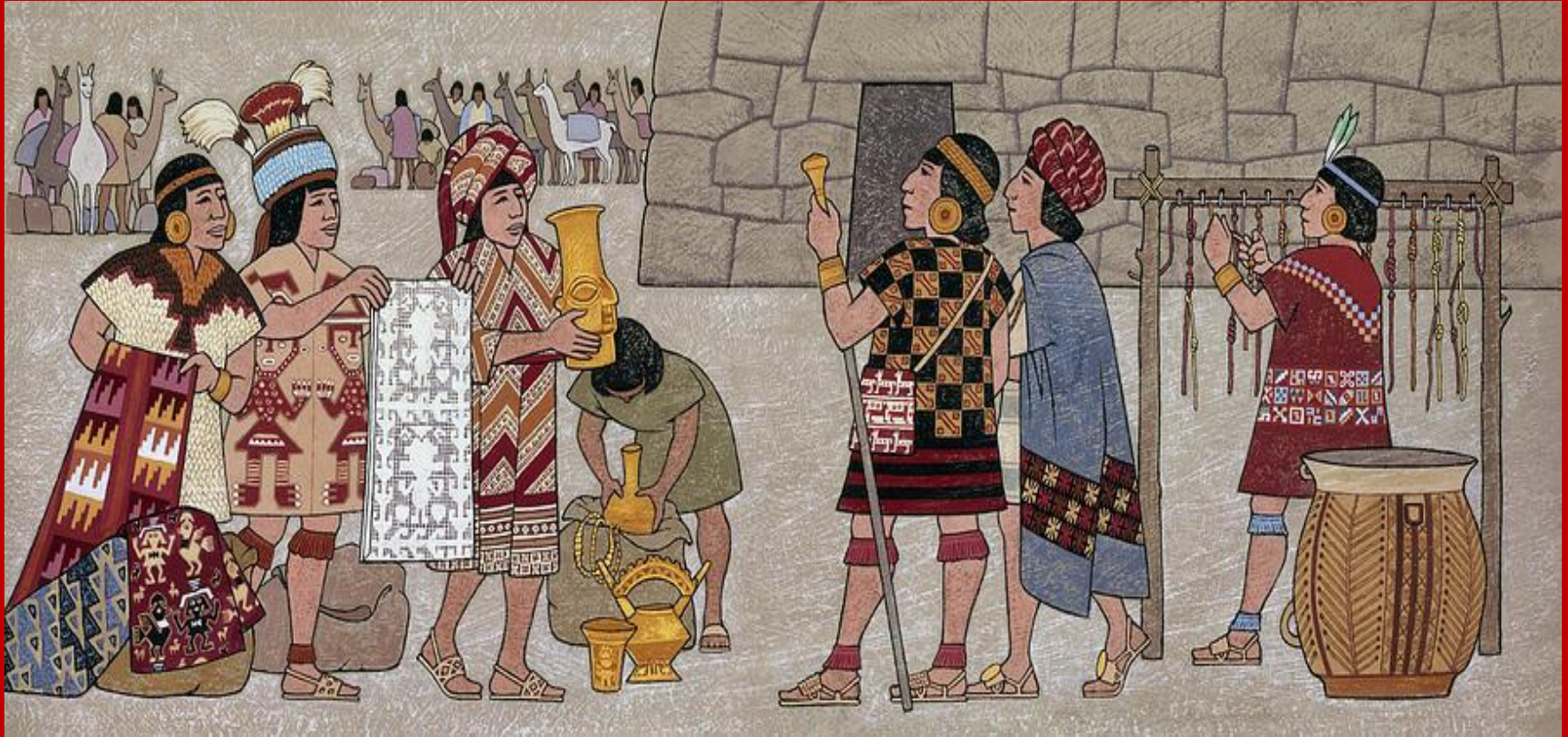


- Paying the mita

[discover-peru.com](http://discover-peru.com)

[mrgrayhistory.wikispaces.com](http://mrgrayhistory.wikispaces.com)

# Social Structure



- Upper Class

# Social Structure



- Lower Class

# Agriculture



# Agriculture

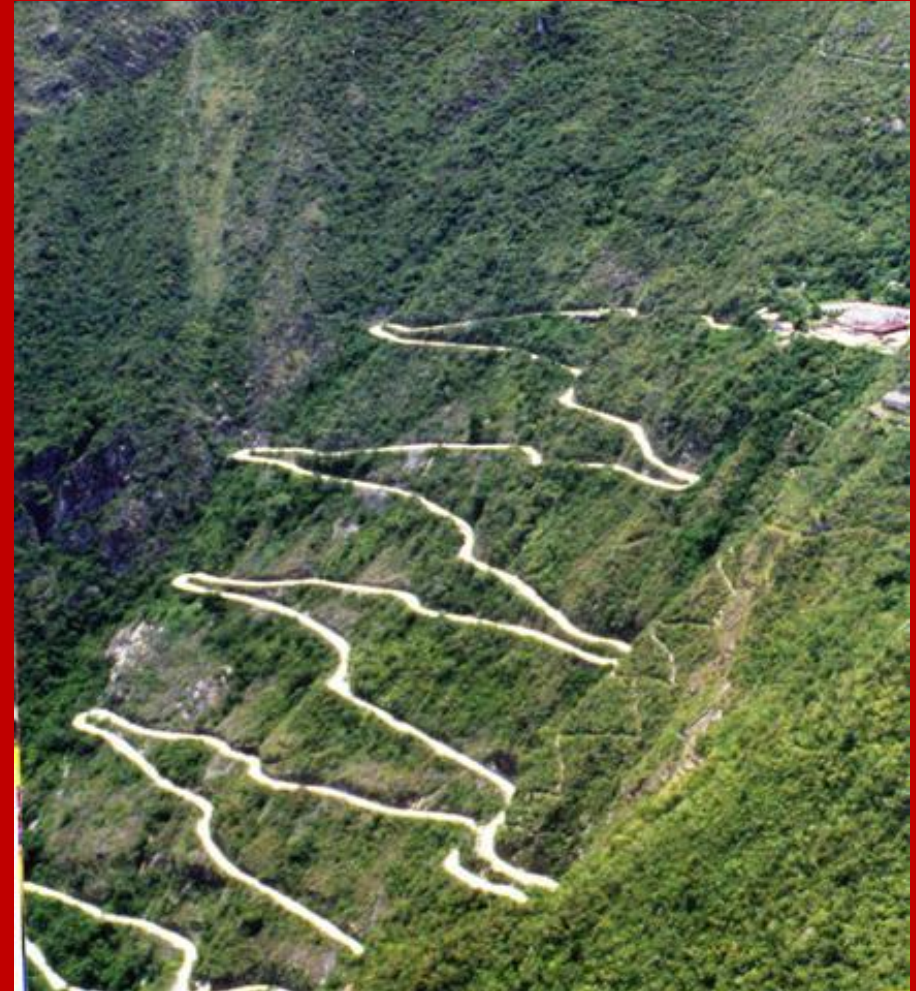




# Agriculture



# Road System



<http://www.es.flinders.edu>

[ancientamericans.weebly.com](http://ancientamericans.weebly.com)

# Road System



# Road System

