

WS FCS IS Worth the CHOICE

Great school options
for *every* student!

MAGNET +
ZONE CHOICE
PATHWAYS

2023

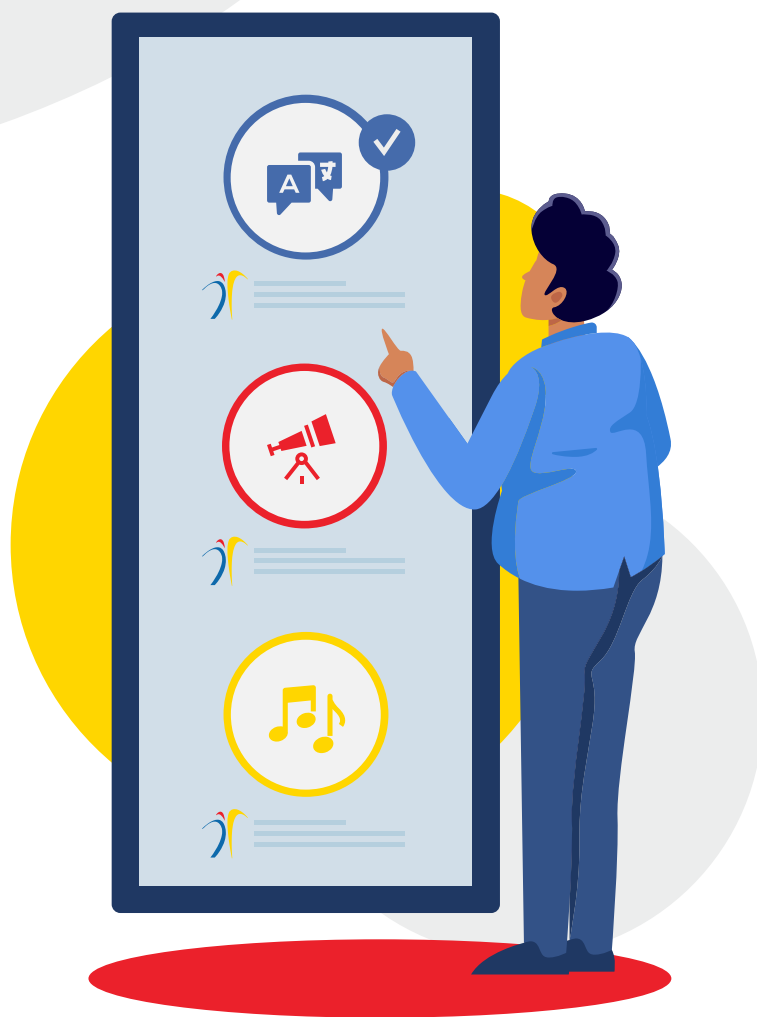
2024

BOOKLET INCLUDES:

Overview of Magnet +
Choice Pathways

Choice School Zones

School Listings for
Elementary, Middle,
and High School
Programs





WS/FCS School Choice Mission

We are committed to providing **all students** with **high-quality and engaging school choice options** in **every zip code**, so they will graduate with interpersonal, academic, and workforce **skills to compete globally and contribute to society**.

School Choice in WS/FCS

Students in Winston-Salem/Forsyth County have opportunities unlike those in any other system in North Carolina. WS/FCS choice options serve every kind of student. Families may choose from their residential schools, zone schools, or magnet schools. **WS/FCS is worth the choice!**

Magnet Vs Choice Schools

DIFFERENCES BETWEEN MAGNET AND CHOICE SCHOOLS

Magnet schools offer educational opportunities for grades K-12, through specialized programs, multicultural collaboration, arts, science and career pathways.

Choice schools give parents the opportunity to choose from their residential schools or another school inside of their zone or from a magnet school.

At every school, students are led by teachers and staff members dedicated to helping them grow as students and people.



School Locator

Find your school at

wsfcs.k12.nc.us/Page/121458



2023-2024 Student Assignment Timeline



| Event | Start Date | End Date |
|--|------------------------------|-----------------|
| Magnet School Showcase Location: Education Building 10am - 1pm | 10/28/2023 | 10/28/2023 |
| Magnet Theme School Group Tours Scheduled by individual schools | 10/30/2023 | 12/15/2023 |
| ALL School Group Tours Scheduled by Individual Schools | All Year Long By Appointment | |
| Magnet/Choice Application Period Grades 1 - 11 | 10/28/2023 | 1/26/2024 |
| Out of Zone Application Period Grades 1 - 8 | 2/5/2024 | 2/12/2024 |
| Rising K-5 School Showcase Location: The Career Center 10am - 1pm | 3/16/2024 | 3/16/2024 |
| Elementary Choice and Magnet Application Period | 3/16/2024 | 4/19/2024 |
| Elementary Out of Zone Period | 5/13/2024 | 5/24/2024 |

Magnet Schools and Zone Choice Programs

*Asterisk denotes Magnet schools



Visual and Performing Arts

Arts opportunities include orchestra, band, visual arts, dance, choral music and drama. Some arts magnet schools offer additional courses such as film making, photography, piano, guitar, animation and gymnastics.

Elementary Mineral Springs*
Diggs-Latham* (+Dual Language and AVID)

Middle Mineral Springs*(AVID)

High Reynolds*



Dual Language Immersion (Spanish) Pathway

The program goals for all students are bilingualism, biliteracy, high academic achievement, and sociocultural competence.

DLI programs allow students to learn content such as Math, Science, and Social Studies through another language.

Immersion programs begin in Kindergarten and students acquire the target language, such as Spanish, through a natural process of language acquisition.

Elementary Speas* (+ IB)
Smith Farm (Zone Choice Dual Language Program)

Middle Paisley* (+IB and AVID)
East Forsyth (Zone Choice Dual Language Program)

High Paisley*
East Forsyth (Dual Language Program)



STEM/STEAM

STEM education is the intentional integration of science, technology, engineering, and mathematics, to create a student-centered learning environment in which students investigate and engineer solutions to real-world problems.

STEAM education integrates science, technology, engineering, the arts, and math as pathways to guide student inquiry, discussions, and critical thinking.

Elementary Brunson* STEM
Moore* STEAM

Middle Hanes* STEM (HAG Program)
Wiley* STEAM
Philo-Hill (STEAM)*

High Atkins*



International Baccalaureate (IB)/ Dual Language Immersion

International Baccalaureate Programmes aim to provide a learning environment where students are challenged to think critically and inquisitively.

The programmes comprise a holistic learning environment guiding students to be citizens of the world, preparing them through units of inquiry, self-directed learning, and service to the community.

Elementary Speas* (+ Dual Language and International Baccalaureate)
Konnoak* (International Baccalaureate candidacy)

Middle Paisley* (+Dual Language, AVID, International Baccalaureate)
Flat Rock* (International Baccalaureate candidacy)

High Paisley* (International Baccalaureate)
Parkland* (International Baccalaureate)

Choice School Listing

Elementary Schools by Zone pg. 4-7
Middle Schools by Zone pg. 8-9
High Schools pg. 10
Non-Traditional Schools pg. 11

Elementary Schools by Zone

ZONE 1 BLUE

Forest Park: 2019 Milford Street, 27107336-703-4291
wsfcs.k12.nc.us/fpes

Hall-Woodward: 125 Nicholson Road, 27107.....336-703-4238
wsfcs.k12.nc.us/hwes

Smith Farm: 4250 Johnny Knoll Lane, 27107.....336-703-4188
Dual-Language Immersion - wsfcs.k12.nc.us/sfe

Sedge Garden: 475 Sedge Garden Road, Kernersville 27284.....336-771-4545
wsfcs.k12.nc.us/sges

Union Cross: 4300 High Point Road, Kernersville 27284.....336-703-4233
wsfcs.k12.nc.us/uces

ZONE 1 GREEN

Caleb’s Creek: 1109 Salem Crossing Road, Kernersville 27284336-703-6757
wsfcs.k12.nc.us/ccreekes

Hall-Woodward: 125 Nicholson Road, 27107.....336-703-4238
wsfcs.k12.nc.us/hwes

Smith Farm: 4250 Johnny Knoll Lane, 27107.....336-703-4188
Dual-Language Immersion - wsfcs.k12.nc.us/sfe

Sedge Garden: 475 Sedge Garden Road, Kernersville 27284.....336-771-4545
wsfcs.k12.nc.us/sges

Union Cross: 4300 High Point Road, Kernersville 27284.....336-703-4233
wsfcs.k12.nc.us/uces

ZONE 2

| | |
|---|--------------|
| Cash: 4700 Old Hollow Road, Kernersville 27284..... | 336-703-4174 |
| wsfcs.k12.nc.us/cashes | |
| Kernersville: 512 W Mountain Street, Kernersville 27284..... | 336-703-4100 |
| wsfcs.k12.nc.us/kes | |
| Petree: 3815 Old Greensboro Road, 27101 | 336-703-4141 |
| wsfcs.k12.nc.us/pes | |
| Piney Grove: 1500 Piney Grove Road, Kernersville 27284..... | 336-703-4122 |
| wsfcs.k12.nc.us/pges | |

ZONE 3

| | |
|---|--------------|
| Ashley: 1647 Ashley School Circle, 27105..... | 336-703-4203 |
| wsfcs.k12.nc.us/aes | |
| Ibrahim: 5036 Old Walkertown Road, 27105 | 336-703-6771 |
| wsfcs.k12.nc.us/ies | |
| Mineral Springs: 4527 Ogburn Avenue, 27105..... | 336-703-6788 |
| Visual and Performing Arts - wsfcs.k12.nc.us/mses | |
| Walkertown: 2971 Main Street, Walkertown 27051 | 336-703-4252 |
| wsfcs.k12.nc.us/wtes | |

ZONE 4

| | |
|--|--------------|
| Gibson: 2020 Walker Road, 27106..... | 336-703-4212 |
| wsfcs.k12.nc.us/ges | |
| North Hills: 340 Alspaugh Drive, 27105..... | 336-703-4176 |
| wsfcs.k12.nc.us/nhes | |
| Old Richmond: 6315 Tobaccoville Road, Tobaccoville 27050..... | 336-703-4287 |
| wsfcs.k12.nc.us/ores | |
| Old Town: 3930 Reynolda Road, 27106 | 336-703-4283 |
| wsfcs.k12.nc.us/otes | |
| Rural Hall: 275 College Street, Rural Hall 27045..... | 336-703-6789 |
| wsfcs.k12.nc.us/rhes | |

Choice School Zones ELEMENTARY, CONTINUED

ZONE 5

| | |
|--|--------------|
| Jefferson: 4000 Jefferson School Lane, 27106 | 336-703-4215 |
| wsfcs.k12.nc.us/jes | |
| Kimberley Park: 1701 N Cherry Street, 27105 | 336-703-6731 |
| wsfcs.k12.nc.us/kpes | |
| Sherwood Forest: 1055 Yorkshire Road, 27106..... | 336-774-4646 |
| wsfcs.k12.nc.us/sfes | |
| Speas Global: 2000 W Polo Road, 27106..... | 336-703-4135 |
| International Baccalaureate (IB) + Dual-Language Immersion - wsfcs.k12.nc.us/ses | |
| Vienna: 1975 Chickasha Road, Pfafftown 27040 | 336-703-4178 |
| wsfcs.k12.nc.us/ves | |

ZONE 6

| | |
|--|--------------|
| Brunson: 155 N Hawthorne Road, 27104 | 336-703-4206 |
| STEM - wsfcs.k12.nc.us/brunsones | |
| Cook Literacy: 920 11th Street NW, 27105..... | 336-703-4201 |
| wsfcs.k12.nc.us/cookes | |
| Meadowlark: 401 Meadowlark Drive, 27106 | 336-703-4208 |
| wsfcs.k12.nc.us/mes | |
| South Fork: 4332 Country Club Road, 27104..... | 336-703-4231 |
| wsfcs.k12.nc.us/southforkes | |
| Whitaker: 2600 Buena Vista Road, 27104 | 336-703-6740 |
| wsfcs.k12.nc.us/wes | |

ZONE 7 BLUE

| | |
|---|--------------|
| Bolton: 1250 Bolton Street, 27103..... | 336-703-4247 |
| wsfcs.k12.nc.us/boltones | |
| Lewisville: 150 Lucy Lane, Lewisville 27023..... | 336-703-4224 |
| wsfcs.k12.nc.us/les | |
| Moore: 451 Knollwood Street, 27103..... | 336-727-2860 |
| STEAM - wsfcs.k12.nc.us/moorees | |
| Morgan: 3210 Village Point Drive, Clemmons 27012..... | 336-703-4148 |
| wsfcs.k12.nc.us/morganes | |
| Southwest: 1631 Southwest School Drive, Clemmons 27012 | 336-703-4195 |
| wsfcs.k12.nc.us/swes | |

ZONE 7 GREEN

| | |
|--|--------------|
| Bolton: 1250 Bolton Street, 27103..... | 336-703-4247 |
| wsfcs.k12.nc.us/boltonestones | |
| Diggs-Latham: 986 Hutton Street, 27101 | 336-703-4102 |
| Visual and Performing Arts + AVID - wsfcs.k12.nc.us/dles | |
| Moore: 451 Knollwood Street, 27103..... | 336-727-2860 |
| STEAM - wsfcs.k12.nc.us/moorees | |
| Morgan: 3210 Village Point Drive, Clemmons 27012..... | 336-703-4148 |
| wsfcs.k12.nc.us/morganes | |
| Southwest: 1631 Southwest School Drive, Clemmons 27012 | 336-703-4195 |
| wsfcs.k12.nc.us/swes | |

ZONE 8 BLUE

| | |
|---|--------------|
| Clemmons: 6200 Bingham Avenue, Clemmons 27012 | 336-703-4210 |
| wsfcs.k12.nc.us/ces | |
| Griffith: 1385 W Clemmons Road, 27127 | 336-703-4245 |
| wsfcs.k12.nc.us/griffithes | |
| Kimmel Farm: 4672 Ebert Road, 27127 | 336-703-6760 |
| wsfcs.k12.nc.us/kfes | |
| Konnoak: 3200 Renon Road, 27127 | 336-703-4163 |
| International Baccalaureate (IB) - wsfcs.k12.nc.us/konnoakes | |
| Ward: 3775 Fraternity Church Road, 27127..... | 336-703-4235 |
| wsfcs.k12.nc.us/wardes | |

ZONE 8 GREEN

| | |
|---|--------------|
| Easton: 734 E Clemmons Circle, 27107 | 336-748-4063 |
| wsfcs.k12.nc.us/ees | |
| Griffith: 1385 W Clemmons Road, 27127..... | 336-703-4245 |
| wsfcs.k12.nc.us/griffithes | |
| Kimmel Farm: 4672 Ebert Road, 27127..... | 336-703-6760 |
| wsfcs.k12.nc.us/kfes | |
| Konnoak: 3200 Renon Road, 27127 | 336-703-4163 |
| International Baccalaureate (IB) - wsfcs.k12.nc.us/konnoakes | |
| Ward: 3775 Fraternity Church Road, 27127..... | 336-703-4235 |
| wsfcs.k12.nc.us/wardes | |

Choice School Zones

MIDDLE SCHOOLS

EAST ZONE

- East Forsyth:** 810 Bagley Drive, Kernersville 27284336-703-6765
Dual-Language Immersion - wsfcs.k12.nc.us/efms
- Kernersville:** 110 Brown Road, Kernersville 27284336-703-4255
wsfcs.k12.nc.us/kms
- Winston-Salem Preparatory Academy:** 1215 N Cameron Avenue, 27101336-703-6732
AVID - wsfcs.k12.nc.us/wsprep

MIDWEST ZONE

- Jefferson:** 3500 Sally Kirk Road, 27106.....336-703-4222
wsfcs.k12.nc.us/jms
- Paisley:** 1394 Thurmond Street, 27105.....336-703-4168
Dual-Language Immersion + International Baccalaureate (IB) - wsfcs.k12.nc.us/paisley
- Wiley:** 1400 Northwest Boulevard, 27104.....336-727-2378
STEAM - wsfcs.k12.nc.us/wiley

NORTHEAST ZONE

- Mineral Springs:** 4559 Ogburn Avenue, 27105.....336-703-6733
Visual and Performing Arts + AVID - wsfcs.k12.nc.us/msms
- Walkertown:** 5240 Sullivantown Road, Walkertown 27051336-703-4154
wsfcs.k12.nc.us/walkertown
- Winston-Salem Preparatory Academy:** 1215 N Cameron Avenue, 27101336-703-6732
AVID - wsfcs.k12.nc.us/wsprep

NORTHWEST ZONE

- Mineral Springs:** 4559 Ogburn Avenue, 27105.....336-703-6733
Visual and Performing Arts + AVID - wsfcs.k12.nc.us/msms
- Lewisville:** 1115 Lewisville-Vienna Road, Lewisville 27023.....336-866-3032
wsfcs.k12.nc.us/lvms
- Northwest:** 5501 Murray Road, 27106.....336-703-4161
wsfcs.k12.nc.us/nwms

SOUTHEAST ZONE

- East Forsyth:** 810 Bagley Drive, Kernersville 27284336-703-6765
Dual-Language Immersion - wsfcs.k12.nc.us/efms
- Southeast:** 1200 Old Salem Road, Kernersville 27284.....336-703-4219
wsfcs.k12.nc.us/sms
- Hanes Magnet:** 2355 Pleasant Street, 27107.....336-703-4171
STEM (HAG Program) - wsfcs.k12.nc.us/hanesms

SOUTHWEST BLUE ZONE

- Clemmons:** 3785 Fraternity Church Road, 27127.....336-703-4217
wsfcs.k12.nc.us/cms
- Flat Rock:** 4648 Ebert Road, 27127336-703-6762
International Baccalaureate (IB) - wsfcs.k12.nc.us/frms
- Meadowlark:** 301 Meadowlark Drive, 27106336-703-4228
wsfcs.k12.nc.us/mms

SOUTHWEST GREEN ZONE

- Clemmons:** 3785 Fraternity Church Road, 27127.....336-703-4217
wsfcs.k12.nc.us/cms
- Flat Rock:** 4648 Ebert Road, 27127336-703-6762
wsfcs.k12.nc.us/frms
- Philo-Hill:** 2700 S. Main Street, 27127 (temporary location).....336-703-4165
STEAM - wsfcs.k12.nc.us/philohill

High Schools

WITH SPECIAL PROGRAMS LISTED

| | |
|---|--------------|
| Atkins Academic and Technology High School: 3605 Old Greensboro Road, 27101..... | 336-703-6754 |
| STEM/Biomedical/Engineering - wsfcs.k12.nc.us/atkinshs | |
| Carver High School: 3545 Carver School Road, 27105..... | 336-727-2987 |
| AVID, Academy of Hospitality/Tourism and Information Technology - wsfcs.k12.nc.us/chs | |
| East Forsyth: 2500 W Mountain Street, Kernersville | 336-703-6735 |
| Academy of Finance + Dual Immersion - wsfcs.k12.nc.us/efhs | |
| Glenn High School: 1600 Union Cross Road, 27284 | 336-771-4500 |
| Academy of Finance and Fire Academy - wsfcs.k12.nc.us/virtual | |
| John F. Kennedy High School: 890 Petree Road, 27106 | 336-703-4143 |
| Construction, Pharmacy, and Prostart - wsfcs.k12.nc.us/jfkhs | |
| Mount Tabor High School 342 E 11th Street, 27101 | 336-703-6700 |
| Academy of Hospitality and Tourism - wsfcs.k12.nc.us/mths | |
| North Forsyth High School 5705 Shattalon Drive, 27105 | 336-661-4880 |
| Academy of Health Sciences - wsfcs.k12.nc.us/nfhs | |
| Parkland High School 1600 Brewer Road, 27127 | 336-771-4700 |
| International Baccalaureate (IB) - wsfcs.k12.nc.us/phs | |
| Reagan High School: 3750 Transou Road, Pfafftown 27040..... | 336-703-6776 |
| wsfcs.k12.nc.us/rhs | |
| R. J. Reynolds: 301 N Hawthorne Road, 27104 | 336-703-4145 |
| Performing and Visual Arts wsfcs.k12.nc.us/reynolds | |
| Walkertown High School: 5240 Sullivantown Rd, Walkertown 27051 | 336-703-4151 |
| Fire Academy - wsfcs.k12.nc.us/whs | |
| West Forsyth High School: 1735 Lewisville-Clemmons Road, Clemmons 27012..... | 336-712-4400 |
| Academy of Finance - wsfcs.k12.nc.us/wfhs | |
| Winston-Salem Preparatory: 1215 N Cameron Avenue, 27011 | 336-703-6732 |
| AVID, Academy for Education and Sports Management - wsfcs.k12.nc.us/wsprep | |

Non-Traditional Programs

ELEMENTARY, MIDDLE, AND HIGH SCHOOL

| | |
|---|--------------|
| Career Center: 910 Highland Court, 27101 | 336-703-4119 |
| wsfcs.k12.nc.us/cc | |
| Carter High School: 851 Highland Court, 27101 | 336-703-4119 |
| wsfcs.k12.nc.us/carterhs | |
| Children’s Center: 2315 Coliseum Drive, 27106 | 336-727-2440 |
| wsfcs.k12.nc.us/cces | |
| The Downtown School: 601 N Cherry Street, 27101 | 336-703-4125 |
| Pre-K, K-8 - wsfcs.k12.nc.us/des | |
| Early College: 2100 Silas Creek Parkway, 27103 | 336-757-3290 |
| wsfcs.k12.nc.us/earlycollege | |
| Forsyth Middle College: 2100 Silas Creek Parkway, 27103 | 336-757-3290 |
| wsfcs.k12.nc.us/MCF | |
| Homebound/Hospital: 2020 E 12th Street, 27101 | 336-703-4250 |
| wsfcs.k12.nc.us/Page/119193 | |
| John F. Kennedy Virtual High School: 890 E 11th Street, 27101 | 336-703-4143 |
| 9-12 - wsfcs.k12.nc.us/jfkhs | |
| Kingswood School: 271 Mercantile Drive, 27105 | 336-703-4290 |
| wsfcs.k12.nc.us/kingswood | |
| Lowrance Middle School: 1394 Thurmond Street, 27105 | 336-703-4181 |
| wsfcs.k12.nc.us/lowrance | |
| Main Street Academy: 3683 Old Lexington Road, Building B, 27107 (temporary location) | 336-703-4185 |
| wsfcs.k12.nc.us/msa | |
| Middle Fork Pre-K Center: 3125 Williston Road, 27051 | 336-703-4224 |
| wsfcs.k12.nc.us/mfes | |
| The Special Children’s School: 4505 Shattalon Drive, 27106 | 336-703-4191 |
| wsfcs.k12.nc.us/scs | |
| Virtual Academy: 601 N Cherry Street, Suite 250 | 336-703-4296 |
| K-8 - wsfcs.k12.nc.us/virtual | |



CTE High School Programs

WS/FCS is proud of the 16+ career academies and the varied pathways offered to our students in our communities.

What are Career Academies?

- Two-to-four year programs operating within different high schools.
- Specialized courses, created by educators and industry specialists, supplement and enrich the traditional school curriculum.
- Many academies offer industry-recognized credentialing opportunities at the time of course completion.

What is an Internship?

- Many of our programs require an internship in the respective area of study for completion.
- Interns have the opportunity to explore potential careers and build transferable skills.
- Employers can use interns to add value to their organization and build their talent pipeline.

Depending on the type of Academy, internships vary in length and whether they are paid or unpaid.

More information at wsfcs.k12.nc.us/Page/125



Zone Choice Programs: AVID

AVID Schools: AVID (Advancement Via Individual Determination) is a college readiness system designed to increase the number of students who enroll and persist in four-year colleges and universities. AVID's proven learning support structure incorporates teaching and learning methodologies in the critical areas of Writing, Inquiry, Collaboration, Organization, and Reading (WICOR).

It is designed to integrate into the daily routines and curriculum of all elementary classrooms across entire grade levels to impact schoolwide structures. The intentional systemic approach provides different resources for different levels, settings, and infrastructures in order to support all students on their path to college readiness. To learn more about AVID, visit avid.org.

Secondary Schools: Carver High School
Clemmons Middle School
Mineral Springs Middle School
Paisley IB
Virtual Academy
Winston-Salem Preparatory Academy

We are committed to providing **all students** with **high-quality and engaging school choice options** in **every zip code**, so they will graduate with interpersonal, academic, and workforce **skills to compete globally and contribute to society.**

WS/FCS SCHOOL CHOICE MISSION



Full List of Magnet Schools

INCLUDING ADDITIONAL PROGRAMS OUTSIDE PATHWAYS

ELEMENTARY SCHOOLS

Brunson Elementary: [STEM](#)

The Downtown School

Diggs-Latham Elementary: [Visual and Performing Arts, Dual Immersion](#)

Mineral Springs Elementary: [Visual and Performing Arts](#)

Moore Magnet Elementary: [STEAM](#)

Speas Elementary: [Dual Immersion and International Baccalaureate \(IB\)](#)

Virtual Academy

Konnoak Elementary: [International Baccalaureate \(IB\) candidacy](#)

MIDDLE SCHOOLS

The Downtown School

Flat Rock Middle: [International Baccalaureate \(IB\) candidacy](#)

Hanes Magnet Middle: [STEM](#)

Mineral Springs Middle: [Visual and Performing Arts](#)

Paisley Middle: [Dual Immersion and International Baccalaureate \(IB\)](#)

Philo-Hill Magnet Middle: [STEAM](#)

Virtual Academy

Wiley Magnet Middle: [STEAM](#)

Winston-Salem Preparatory Academy: [Academy for Education and Sports Management](#)

HIGH SCHOOLS

Atkins High: [STEM, Biomedical, and Engineering](#)

Early College

John F. Kennedy High: [Construction, Pharmacy, and Prostart](#)

John F. Kennedy Virtual

Middle College

North Forsyth High: [Academy of Health Sciences](#)

Parkland High: [Dual Immersion and International Baccalaureate \(IB\)](#)

R. J. Reynolds High: [Visual and Performing Arts](#)

Winston-Salem Preparatory Academy: [Academy for Education and Sports Management](#)